

DESIGN SUMMARY

COUNCIL REQUIREMENTS

THIS PROPERTY FALLS WITHIN THE CITY OF CANTERBURY-BANKSTOWN LGA. THE STORMWATER REQUIREMENTS ARE DETAILED IN THE CANTERBURY DCP 2012 PART B STORMWATER AND FLOOD MANAGEMENT. THIS STORMWATER PLAN HAS BEEN PREPARED IN ACCORDANCE WITH THIS POLICY.

FLOOD RISK

REFER TO THE FLOOD RISK MANAGEMENT PLAN.

RAINWATER REUSE

BASIX REQUIRES A MINIMUM 2000L OF RAINWATER REUSE STORAGE. THE RAINWATER TANK IS TO COLLECT AT LEAST 60m² OF ROOF AREA AND HAVE A CONNECTION FOR IRRIGATION AND LAUNDRY. A SUITABLE RAINWATER TANK HAS BEEN SPECIFIED TO MEET THESE REQUIREMENTS.

ON-SITE DETENTION (OSD)

AS PER SECTION B5.5.1 OF THE DCP, FOR DUAL OCCUPANCIES OSD IS REQUIRED WHERE THE PROPOSED IMPERVIOUS AREA IS GREATER THAN OR EQUAL TO 70% OF THE TOTAL SITE AREA.

WESTERN OCCUPANCY

SITE AREA = 307m²
LANDSCAPED AREA = 136m² (44%)
IMPERVIOUS AREA = 171m² (56%)

EASTERN OCCUPANCY

SITE AREA = 307m²
LANDSCAPED AREA = 129m² (42%)
IMPERVIOUS AREA = 178m² (58%)

AS PER COUNCIL POLICY OSD HAS NOT BEEN PROVIDED. DRAINAGE SYSTEM TO BE PROVIDED WITH GRAVITY FED PIPES AND SILT ARRESTOR PIT.

OVERLAND FLOW

OVERLAND FLOW PATHS TO EVALINE STREET ARE PROVIDED AS SHOWN.

STORMWATER DISCHARGE

PROPOSED DISCHARGE IS TO THE EXISTING PIT ON EVALINE STREET (17 L/S IN THE 20 YR ARI EVENT) AND THE KERB AND GUTTER ON PARK STREET (5 L/S IN THE 20 YR ARI EVENT).

A 1m WIDE EASEMENT WILL BE ESTABLISHED OVER THE EASTERN OCCUPANCY TO ALLOW THE WESTERN OCCUPANCY TO DRAIN WATER THROUGH IT. THE PROPOSED EASEMENT IS DRAWN ON THE PLAN.

FLAT ROOF RWO SIZING

FLAT ROOF MAXIMUM CATCHMENT = 26m²
I = 265
Q = 2.0 L/S
SPS TRUFLO 100mm HAS CAPACITY OF 7 L/S

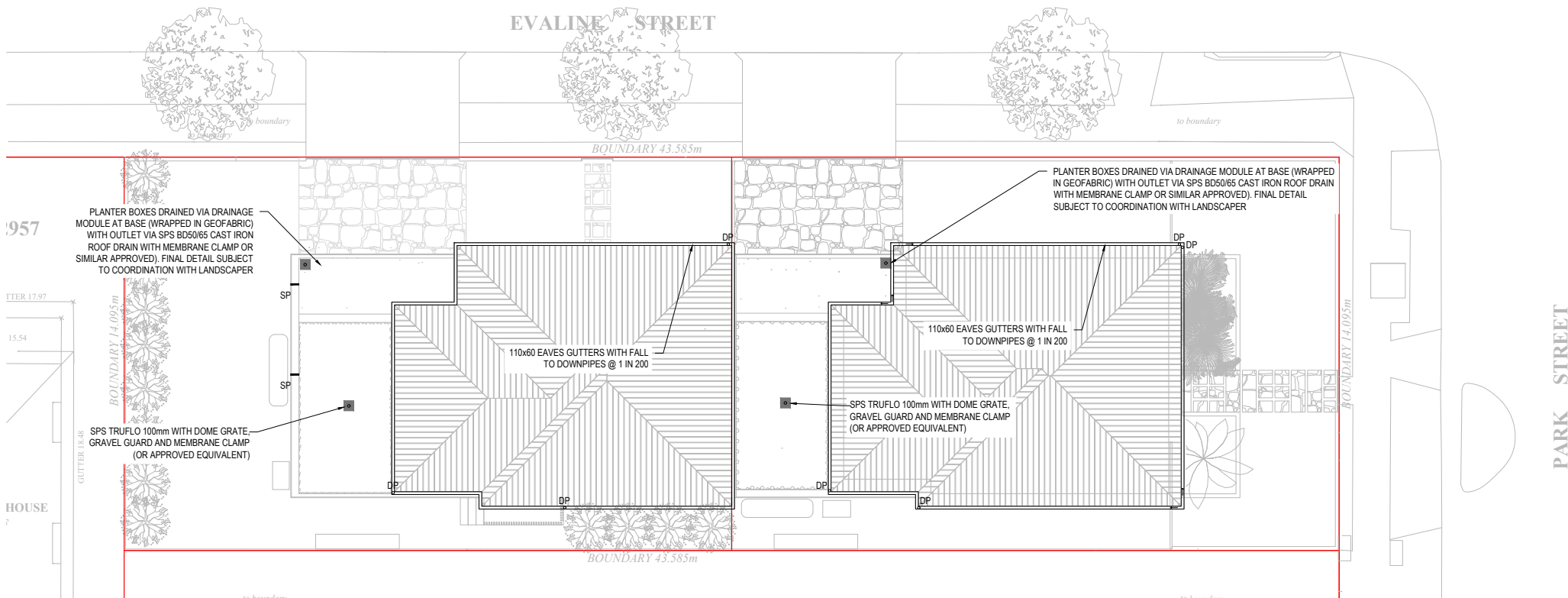
LEGEND

- GRAVITY STORMWATER PIPE 1000 U.N.O. REFER DWG C02 FOR DETAILS
- DP DOWNPIPE CONNECTION
- SP CAST IN PVC OVERFLOW SPITTER/SPIGOT
- GRATED INLET PIT 600x600 CLASS C U.N.O. REFER DWG C02 FOR DETAILS
- SUBSOIL DRAIN REFER DWG C02 FOR DETAILS
- ➡ OVERLAND FLOWPATH



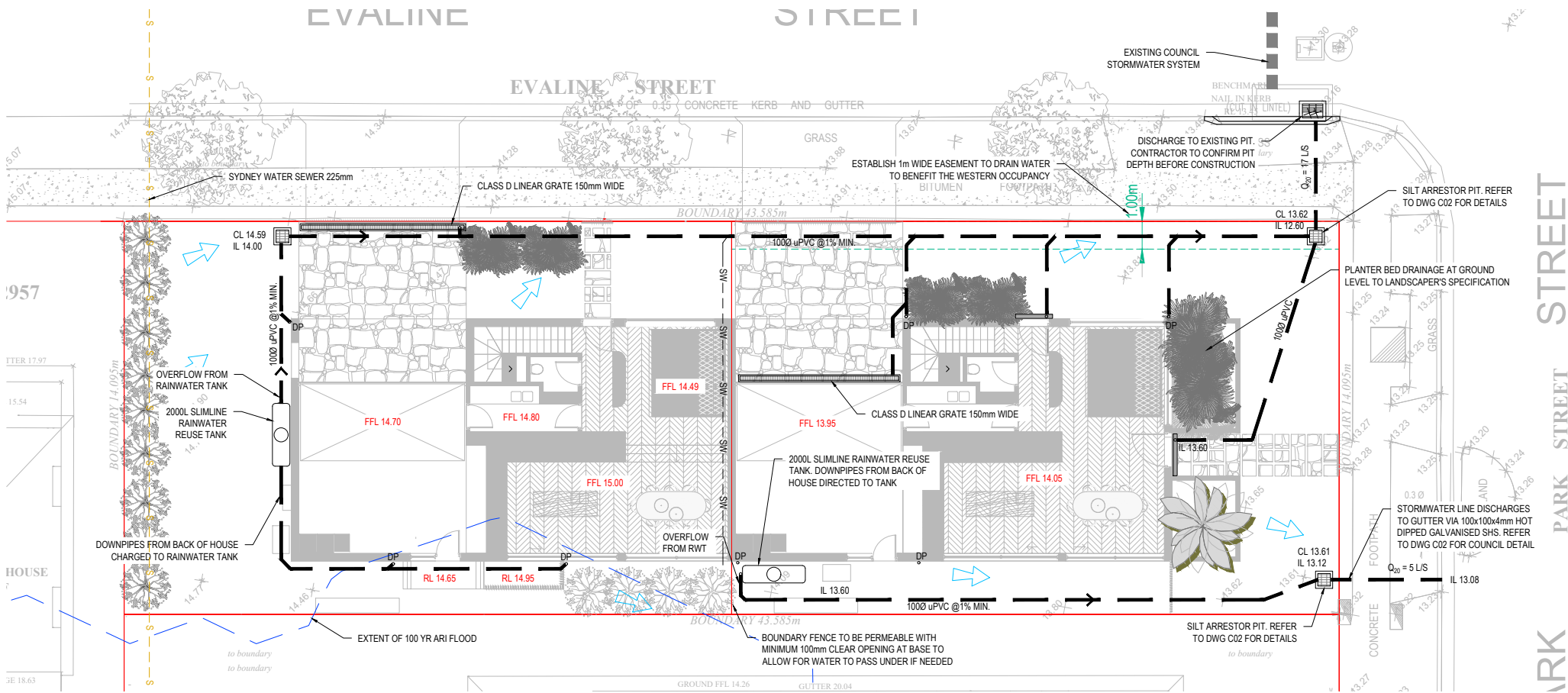
COUNCIL STORMWATER DRAINAGE MAP

NTS



ROOF PLAN


SCALE 1:100



GROUND FLOOR PLAN

SCALE 1:100

REVISIONS:			
No.	REVISION DESCRIPTION	DRAWN	DATE
D	AMENDED LAYOUT	AH	24.08.23
C	AMENDED LAYOUT	AH	21.04.23
B	LEVELS RAISED SO SUIT FLOOD MAPPING	AH	20.01.23
A	FOR APPROVAL	AH	31.10.22

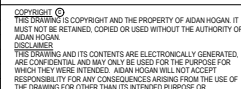
SCALE BAR			
			
COPYRIGHT © THE COPYRIGHT AND THE PROPERTY OF IDEAN HOOGAN. IT MUST NOT BE REPRODUCED, COPIED OR USED WITHOUT THE AUTHORITY OF IDEAN HOOGAN.			
THIS DRAWING AND ITS CONTENTS ARE ELECTRONICALLY GENERATED. THEY ARE CONFIDENTIAL AND MAY ONLY BE USED FOR THE PURPOSE FOR WHICH THEY WERE INTENDED. IDEAN HOOGAN WILL NOT ACCEPT RESPONSIBILITY FOR ANY CONSEQUENCES ARISING FROM THE USE OF THE DRAWING FOR OTHER THAN ITS INTENDED PURPOSE.			
WHERE THE DRAWING HAS BEEN ALTERED, AMENDED OR CHANGED EITHER MANUALLY OR ELECTRONICALLY BY ANY THIRD PARTY, THERE IS AN UNCONTROLLED DOCUMENT. SEE INFORMATION PUBLISHING ONLY. UNLESS STATED, PLOTTING DIMENSIONS TAKE PRECEDENCE OVER SCALED. DO NOT SCALE. REDUCES SIZE. DIMENSIONS. VERIFICATION. NUMBERS PRIOR TO COMMENCING ANY ON SITE OR OFF SITE WORK OF FABRICATION.			



- SCALE 1:20



- ALL DIMENSIONS ARE IN MILLIMETRES UNLESS NOTED OTHERWISE

SCALE RAE

WHERE THE DRAWING HAS BEEN ALTERED, AMENDED OR CHANGED
EITHER MANUALLY OR ELECTRONICALLY BY ANY THIRD PARTY.
NOTE
THIS IS AN UNCONTROLLED DOCUMENT ISSUED FOR INFORMATION
PURPOSES ONLY, UNLESS SIGNED. FIGURED DIMENSIONS TAKE
PRECEDENCE OVER SCALED. DO NOT SCALE REDUCED SIZE DRAWINGS.
VERIFY DIMENSIONS PRIOR TO COMMENCING ANY ON-SITE OR OFF-SITE
WORKS OR FABRICATION.
IF IN DOUBT - ASK

SECTIONS AND NOTES

CIVIL ENGINEER

AIDAN HOGAN B.Eng. CPEng, MIEAustralia
e: hoganaodan@gmail.com

PROJECT TITLE

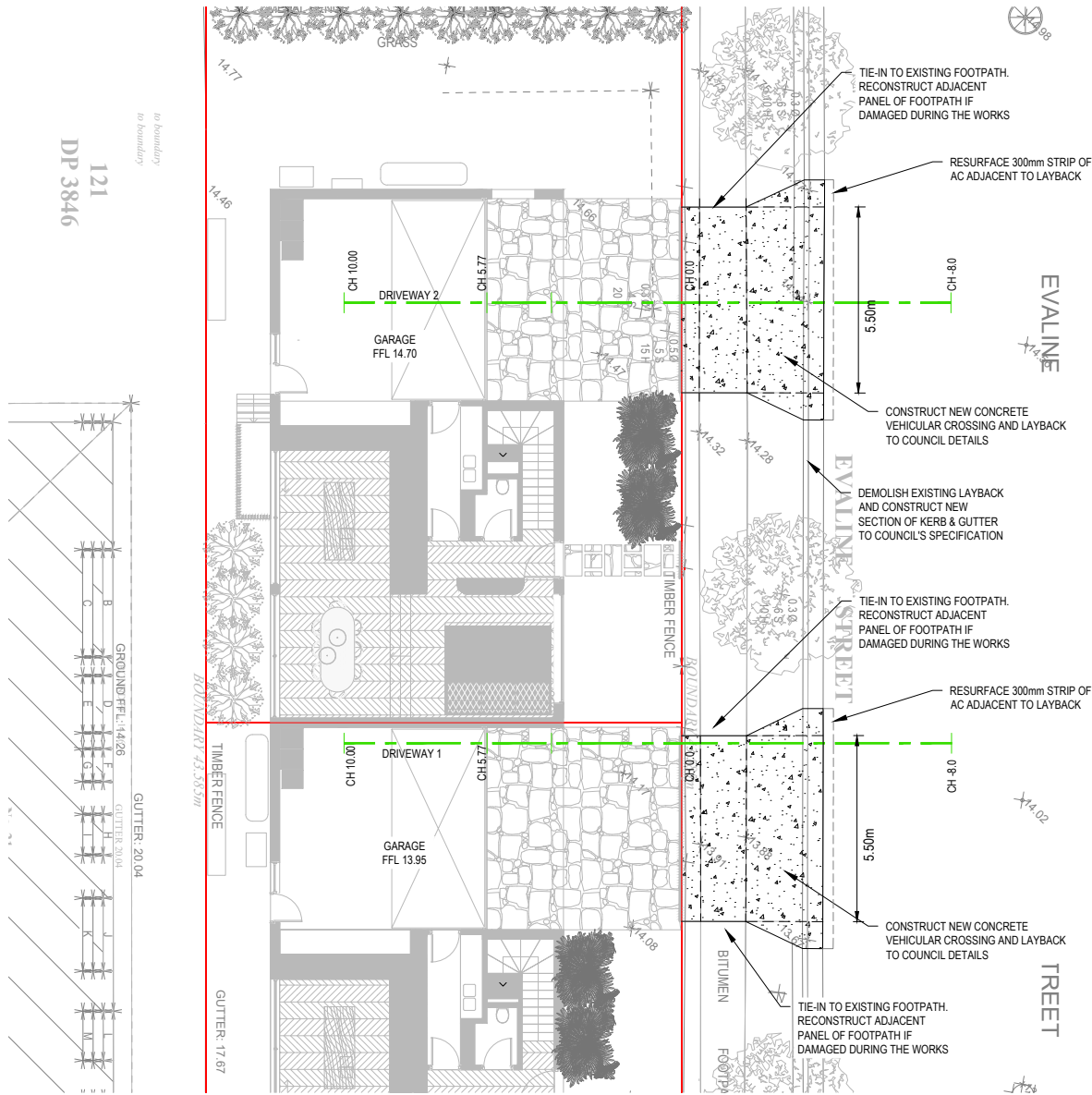
DUAL OCCUPANCY
19 PARK ST, CAMPSIE

[illegible]

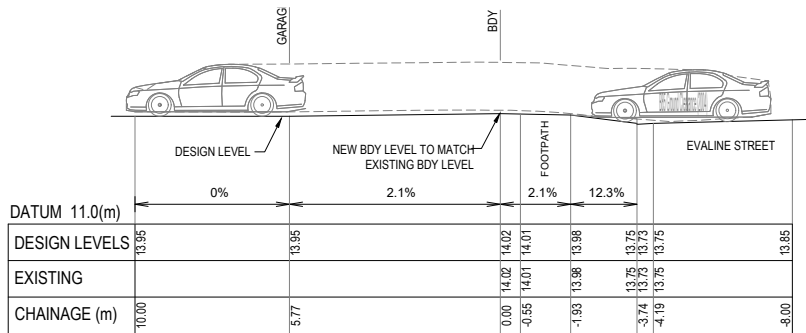
APPROVAL ISSUE

DESIGNER AH	SHEET SIZE A1
SCALE	PROJECT START DATE SEP 2022

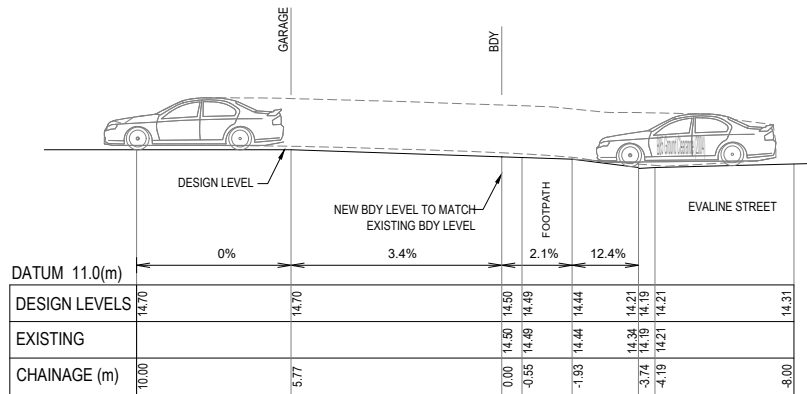
JOB No.	DRAWING No.	REVISION
022006	C02	B



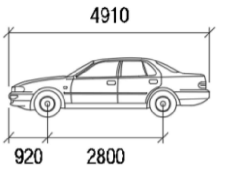
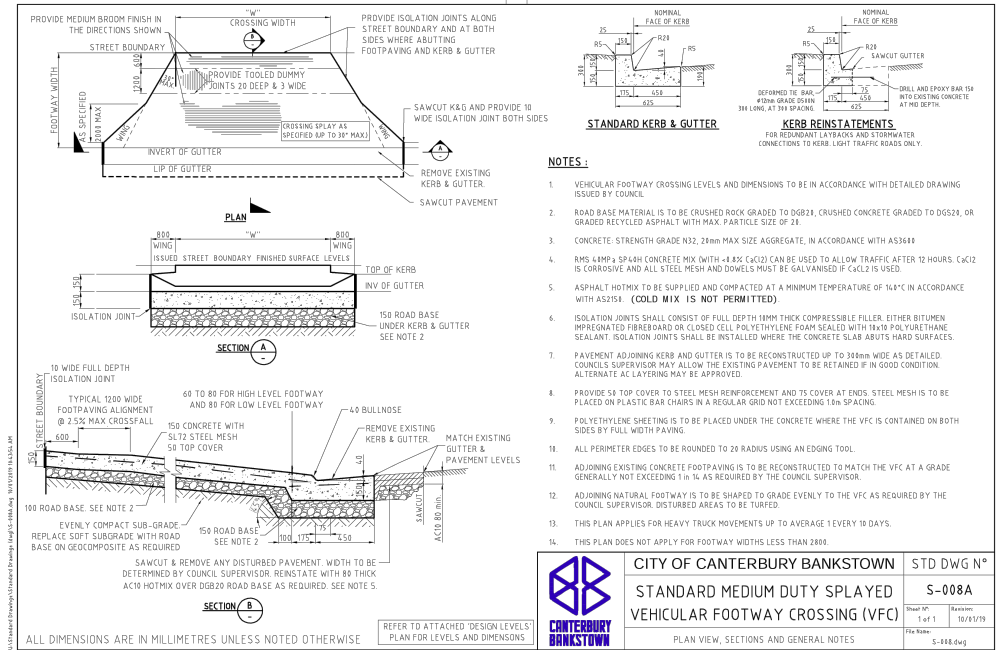
DRIVEWAY PLAN
SCALE 1:100



DRIVEWAY 1 LONG. SECTION
SCALE 1:100




DRIVEWAY 2 LONG. SECTION
SCALE 1:100



B85

	mm
Width	1870
Track	1770
Lock to Lock Time	6.0
Steering Angle	34.1

REVISIONS:			
No.	REVISION DESCRIPTION	DRAWN	DATE
C	AMENDED LAYOUT	AH	24.08.23
B	AMENDED LAYOUT	AH	21.04.23
A	FOR APPROVAL	AH	31.10.22

SCALE BAR			
			
COPYRIGHT © THE COPYRIGHT AND THE PROPERTY OF IDEAN HOOGAN. IT MUST NOT BE REPRODUCED, COPIED OR USED WITHOUT THE AUTHORITY OF IDEAN HOOGAN.			
WHERE THE DRAWING HAS BEEN ALTERED, AMENDED OR CHANGED EITHER MANUALLY OR ELECTRONICALLY BY ANY THIRD PARTY, THERE IS AN UNCONTROLLED DOCUMENT. SEE INFORMATION PUBLISHING ONLY. UNLESS STATED, PLOTTING DIMENSIONS TAKE PRECEDENCE OVER SCALED. DO NOT SCALE. REDUCES SIZE. DIMENSIONS. VERIFICATION. NUMBERS PRIOR TO COMMENCING ANY ON SITE OR OFF SITE WORK OF FABRICATION.			